



DISCOVERY HEALTH MEDICAL SCHEME KIDS CLAIMS TRACKER

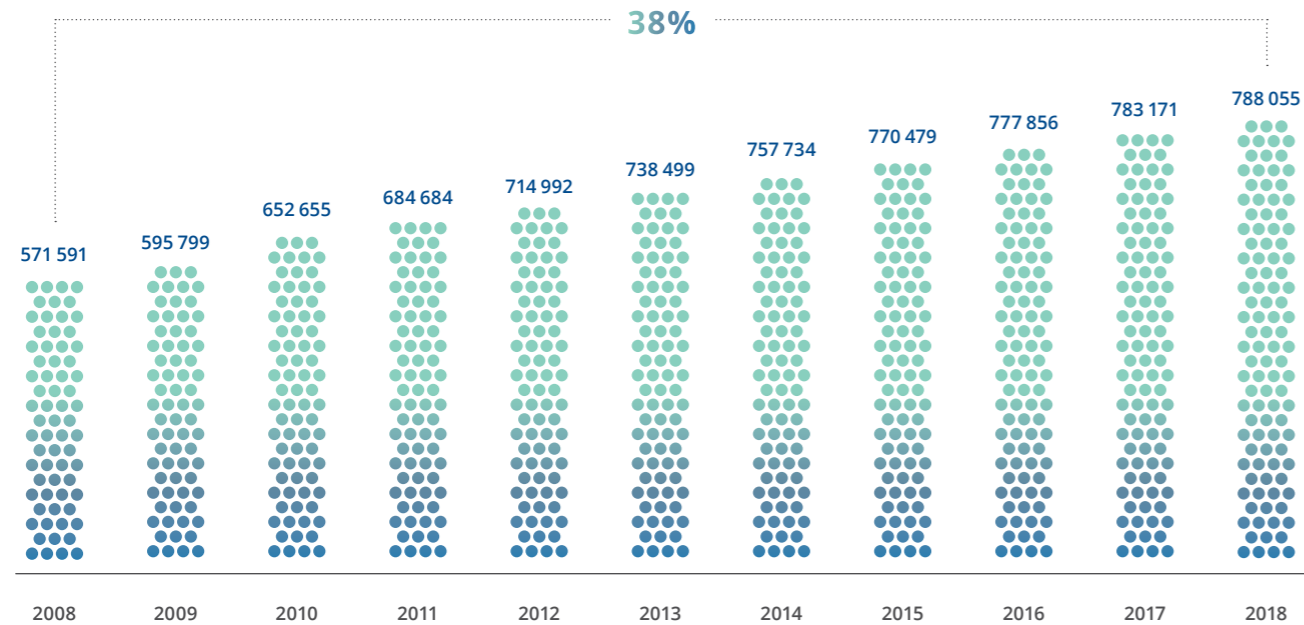
September 2019

for the period January 2018 – December 2018



Number of children on DHMS

Discovery Health Medical Scheme (DHMS) provides healthcare cover to over 788 000 children under the age of 20. This represents 27% of the total medical scheme population and 54% of the open scheme population. The number of children on the Scheme has increased by 38% over the past 10 years. The number of children aged 0 has increased by 15% over the past 10 years and the number of children aged 1 – 19 has increased by 39%. More than 325 000 children have been on the Scheme since birth.



Age distribution compared to the South African population

The proportion of children on DHMS across the different age bands is consistent with the age distribution of the South African population.



Note: All figures for the period January 2018 – December 2018.

Discovery Health Medical Scheme, registration number 1125, is regulated by the Council for Medical Schemes and administered by Discovery Health (Pty) Ltd, registration number 1997/013480/07, an authorised financial services provider.



Over the past 12 months, Discovery Health Medical Scheme paid **R4.6 billion** in claims for children:

This represents 8% of all claims paid by the Scheme

H Hospital claims PG 6

R1.9 bn	Paid for hospital claims
84 115	Hospital admissions
R27 984	Average cost per admission
66 321	Number of children admitted
186 511	Days spent in hospital
2.2	Days spent in hospital per admission
45%	Less likely to be admitted than adults

Oncology claims PG 12

R67 m	Paid for oncology treatment
345	Children claiming for oncology treatment
R14 231	Average cost per child per month
93	Number of children newly diagnosed with cancer

Chronic claims PG 15

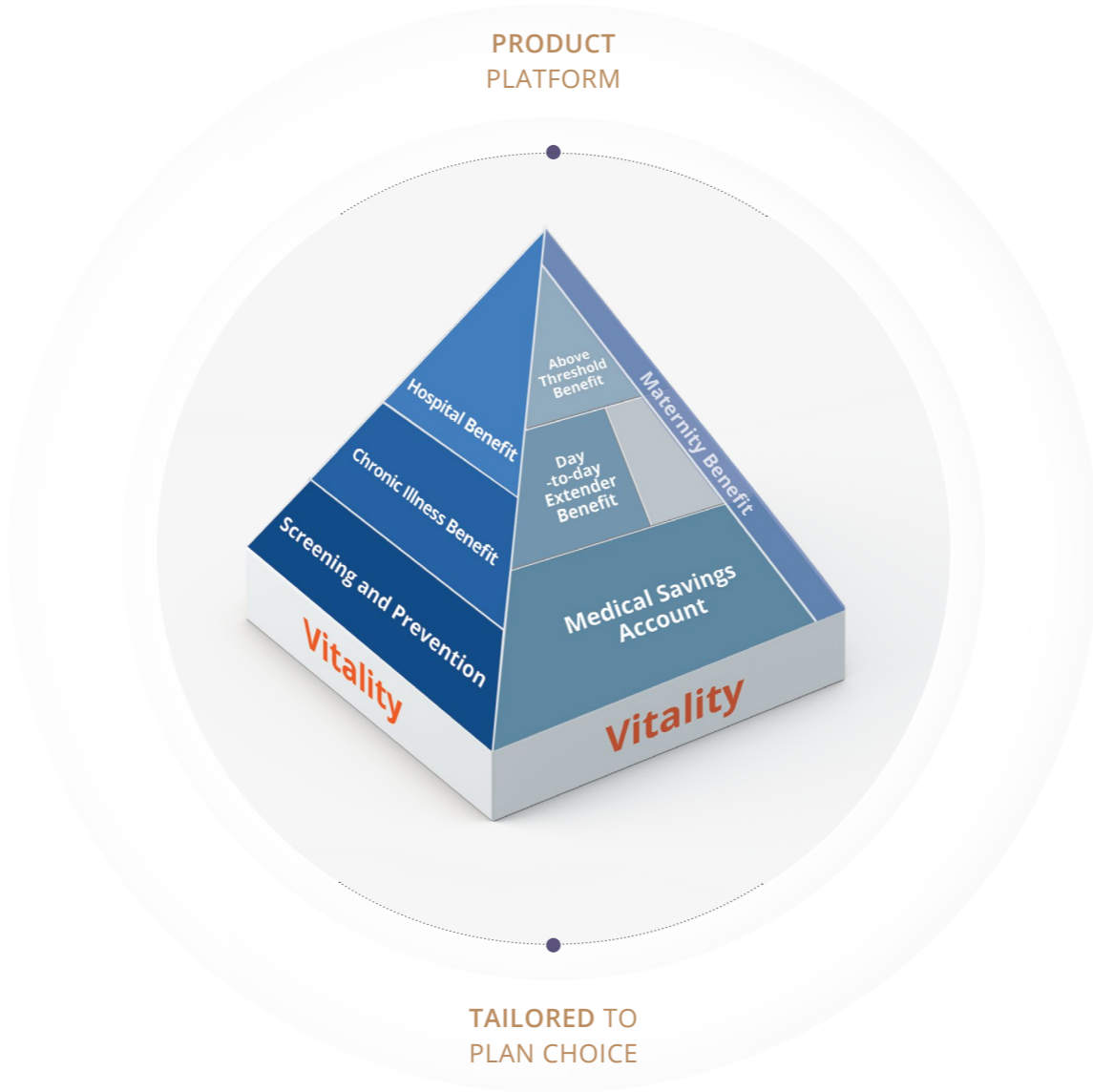
R139 m	Out-of-hospital claims paid relating to chronic conditions
48 927	Children with chronic conditions
R213	Average cost per child per month
7 666	Number of children newly diagnosed
165 033	Scripts dispensed

Day-to-day claims

R2.5 bn	Paid for day-to-day claims
1.2 m	GP visits
223 191	Specialist visits
788 354	Allied visits
2.6 m	Scripts dispensed
168%	Higher average number of GP visits compared to adults
6%	Lower average number of specialist visits compared to adults

Screening and prevention

29 858	Children performing Health Checks
76%	Less likely to perform a Health Check compared to adults



Note: All figures for the period January 2018 – December 2018. All figures relate to children aged 2-17.
 Vitality is a separate wellness product sold and administered by Discovery Vitality (Pty) Ltd, registration number 1999/007736/07, an authorised financial services provider.

Hospital claims by size

In 2018, 16 children experienced hospital claims greater than R1 million and 296 children experienced hospital claims greater than R250 000. The average cover ratio for children's hospital admissions in 2018 was 96.3%.

COST OF ADMISSION	NUMBER OF ADMISSIONS
R25 000 – R50 000	12 204
R50 000 – R75 000	2 758
R75 000 – R100 000	1 001
R100 000 – R250 000	905
R250 000 – R500 000	234
R500 000 – R1 000 000	46
R1 000 000+	16

Note: All figures for the period January 2018 – December 2018. All figures relate to children aged 2-17.

Note: Costs of oncology related admissions are included in the oncology section and excluded from the general hospital claims.

Top 10 hospital claims

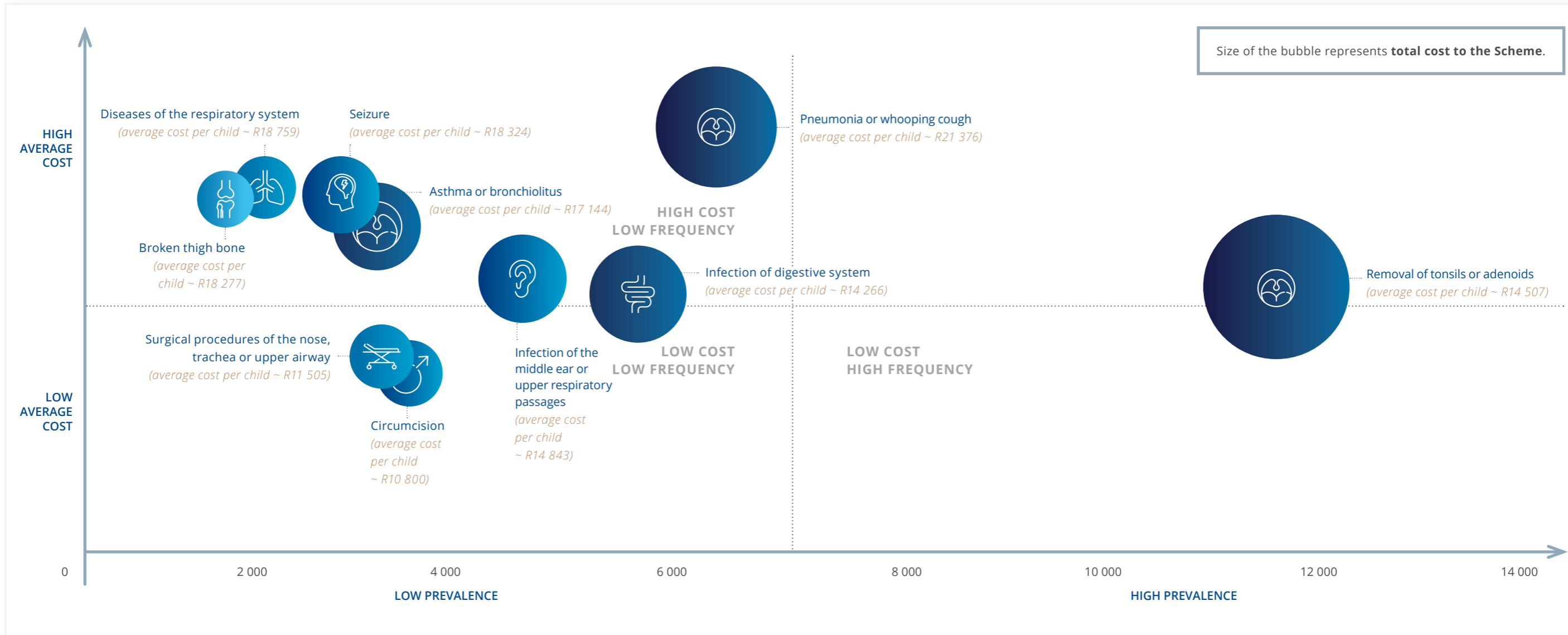
The information below illustrates the highest individual children claims for hospital admissions and highlights that major medical treatments can be required at any age. The most expensive hospital claim in 2018 was for a trauma event for a child aged 14 and had a total cost of R2.9 million.



Admissions contributing most to total hospital claims cost – children aged 2 – 13

Children can be admitted to hospital for a number of reasons. The following graphs illustrate that some admissions are less frequent, but very costly, while others may cost relatively less, but can occur much more frequently.

The most costly admissions to the Scheme for children aged 2 – 13 are the removal of tonsils or adenoids and pneumonia, with a total cost of R165 million and R121 million respectively in 2018. The removal of tonsils or adenoids has the highest prevalence and pneumonia has both a high prevalence and a high average cost. Other admissions like diseases of the respiratory system have a low prevalence but a high average cost per child.

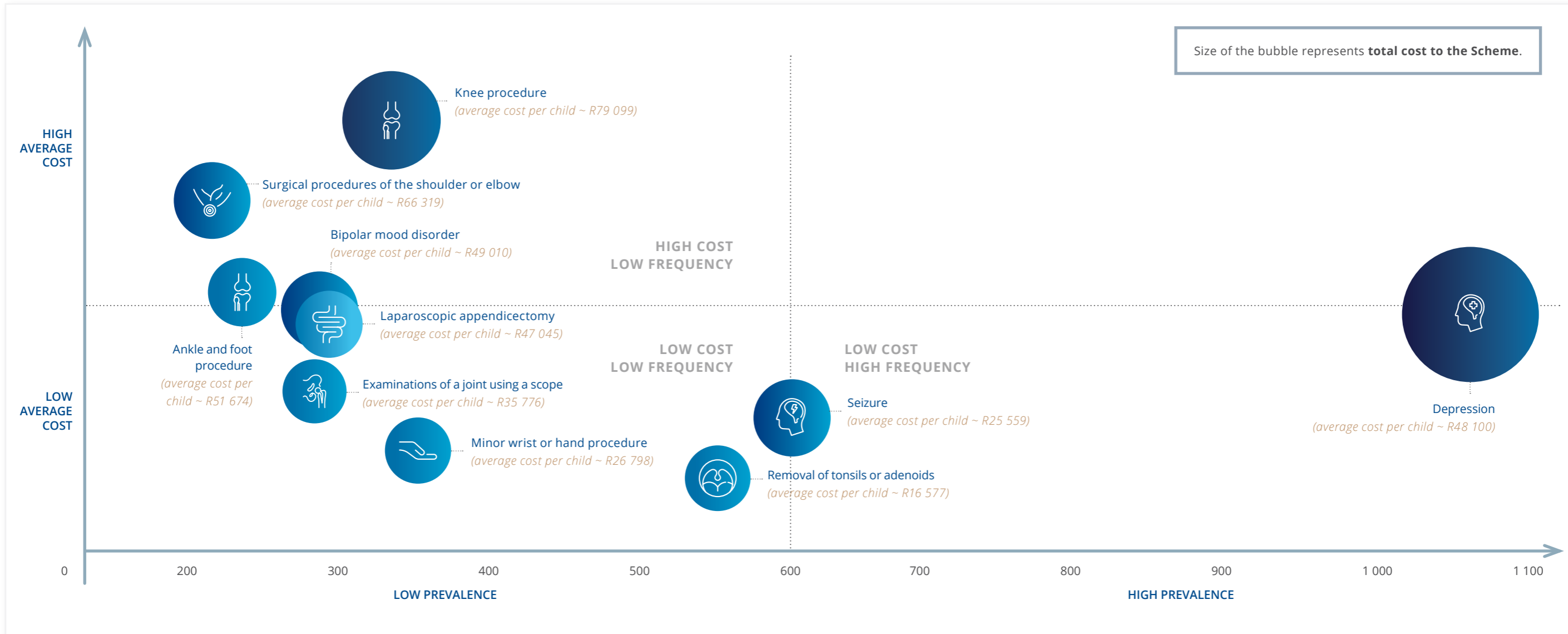


Note: All figures for the period January 2018 – December 2018.

Admissions contributing most to total hospital claims cost – children aged 14 – 17

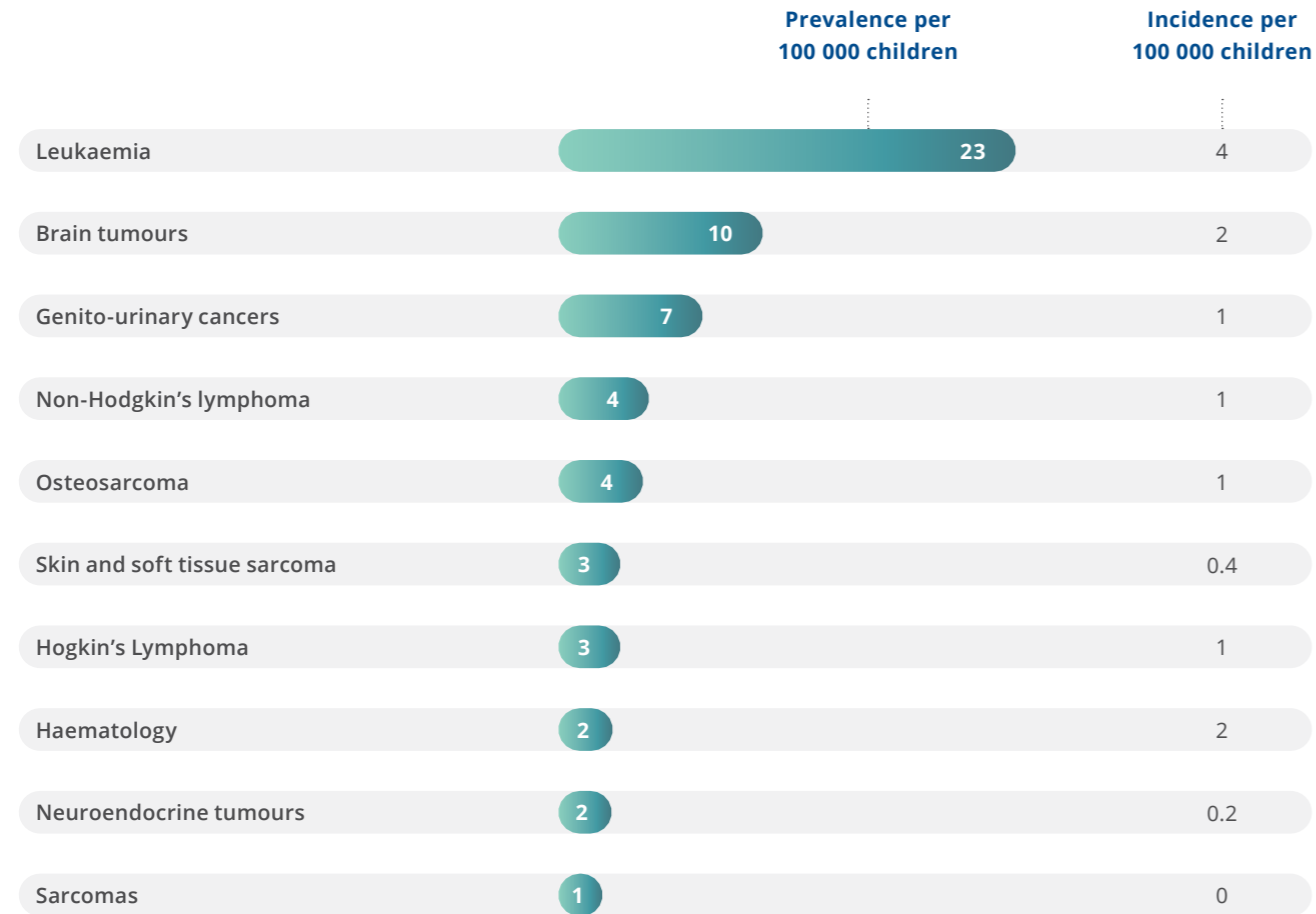
Depression has the highest prevalence and is the most costly admission to the Scheme for children aged 14 – 17.

Other admissions like knee procedures have a lower prevalence but a high average cost per child.

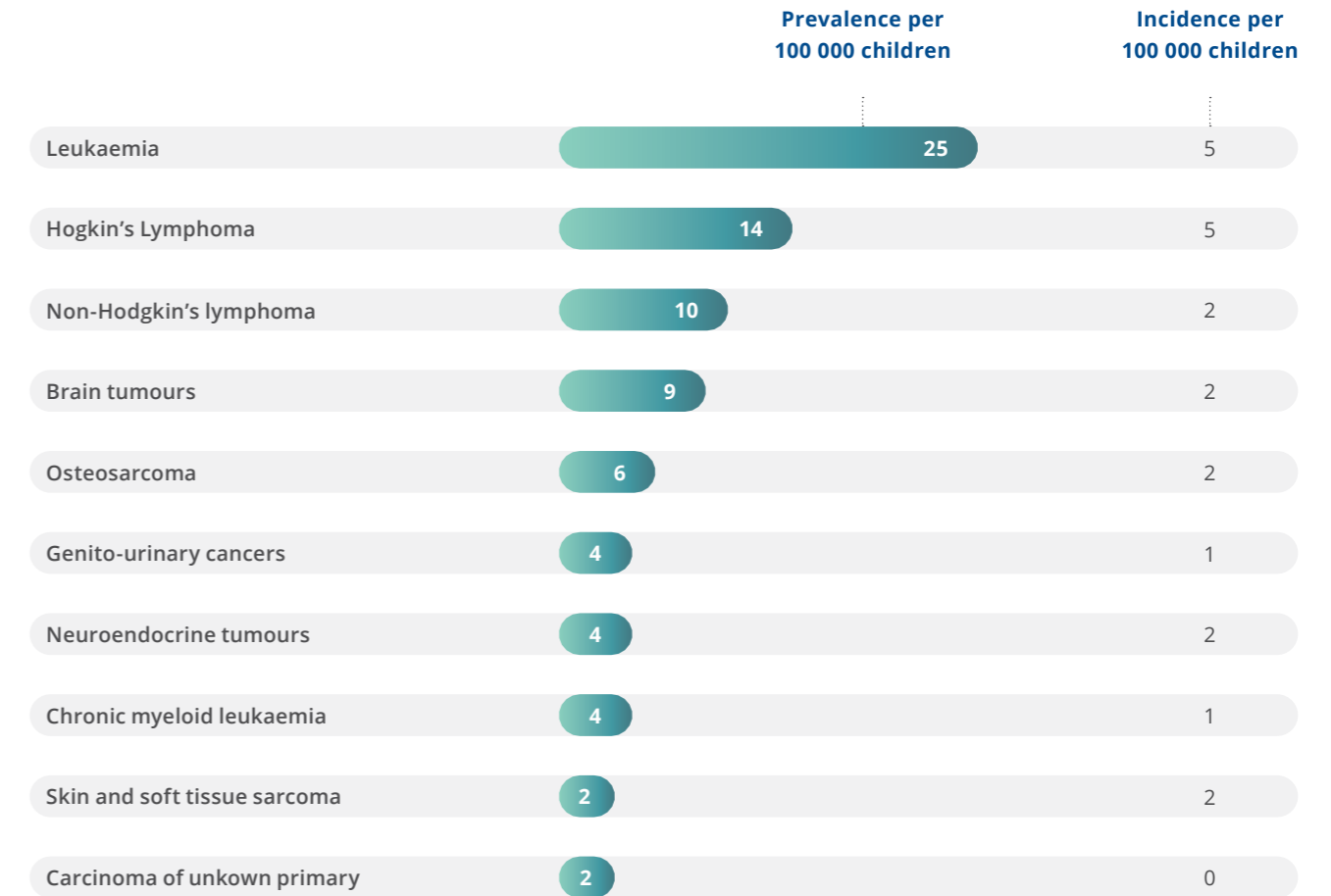


Note: All figures for the period January 2018 – December 2018.

Top 10 cancer types by prevalence: children aged 2 – 13



Top 10 cancer types by prevalence: children aged 14 – 17



The most prevalent cancer in children across all ages is leukaemia. The second most prevalent cancer for children aged 2 – 13 is brain tumours and the second most prevalent cancer for children aged 14 – 17 is Hogkin's lymphoma.

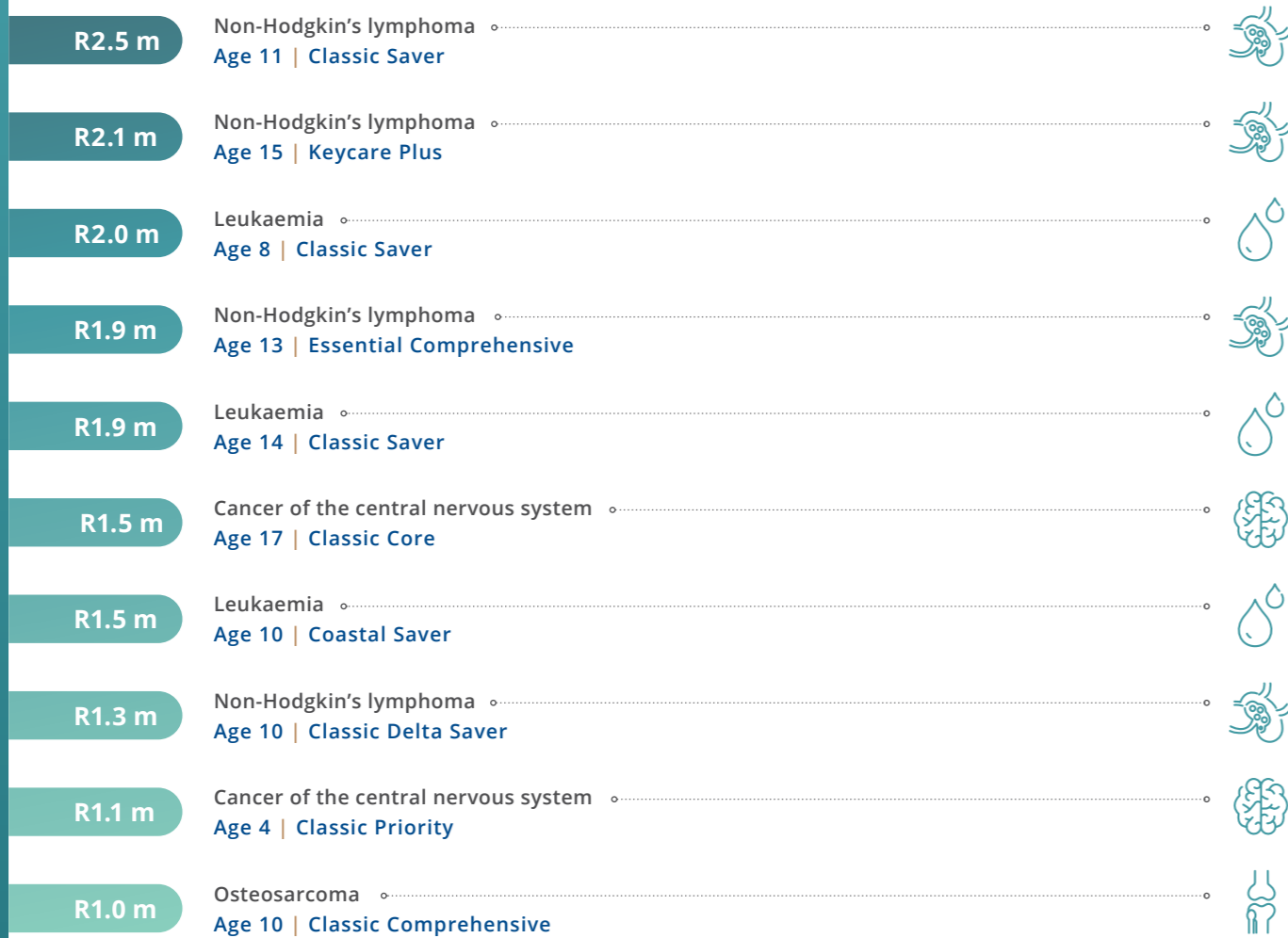
Prevalence refers to the number of children actively claiming for oncology treatment per 100 000 children on the Scheme in 2018.
Incidence refers to the number of children with a new diagnosis of cancer per 100 000 children on the Scheme in 2018.

Note: All figures for the period January 2018 – December 2018.



Top 10 cancer claims

The information below illustrates the highest individual claims for oncology treatment for a child. The most expensive cancer claim for a child in 2018 was an 11 year-old with non-Hodgkin's lymphoma with a total cost of R2.5 million.



The above includes **all cancer related claims** paid by the Scheme.

Note: All figures for the period January 2018 – December 2018. All figures relate to children aged 2-17.

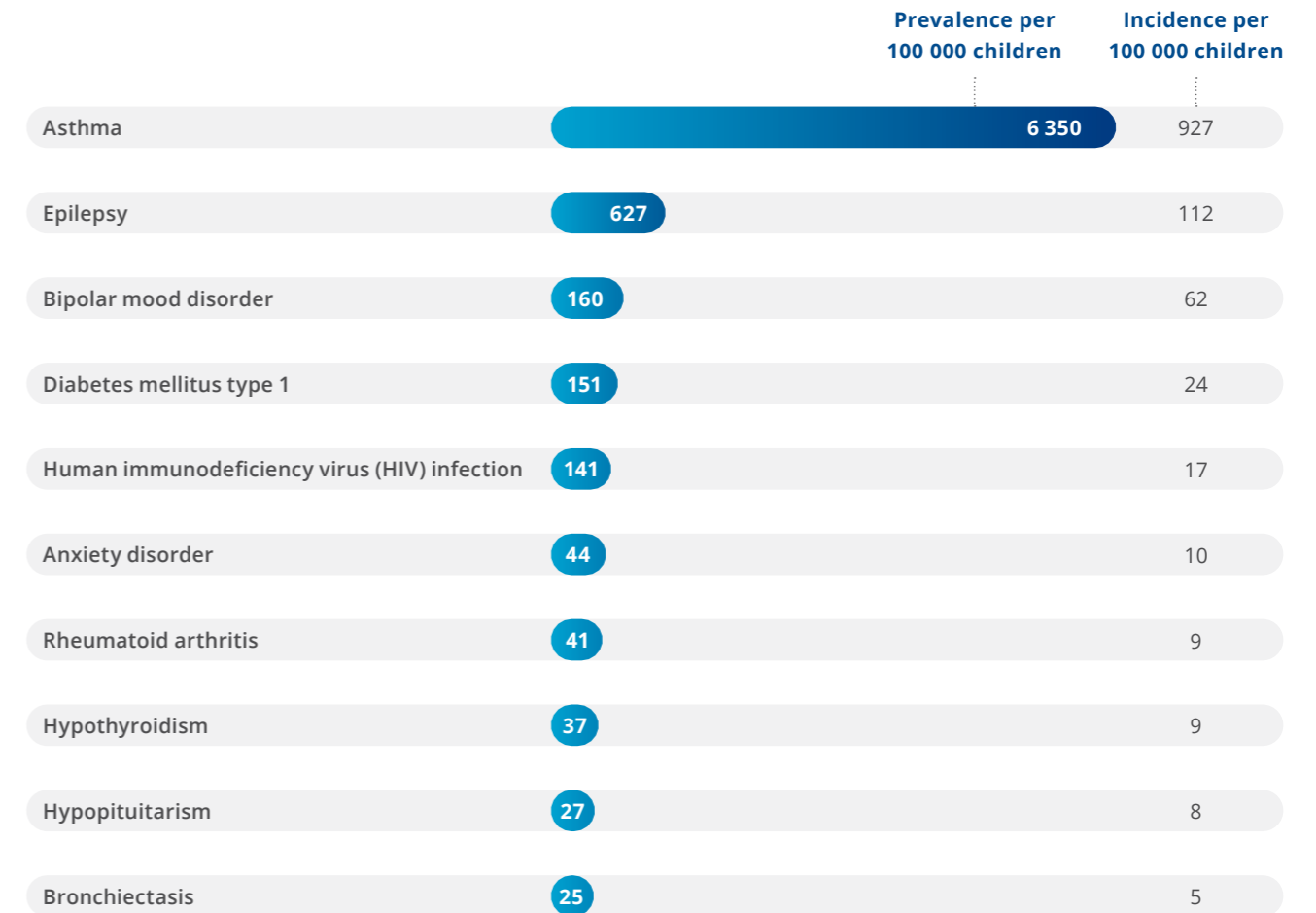
View the Healthcare claims tracker with a focus on oncology claims at www.discovery.co.za



Top 10 chronic conditions by prevalence

Asthma is by far the most prevalent chronic condition amongst children of all ages, with a total of 41 152 children registered in 2018. This is equivalent to 6.3% of all children on the Scheme. The number of registrations for asthma has increased by 54% from 2009 to 2018, whereas the incidence of asthma has increased from 0.85% to 0.94%. The second most prevalent chronic condition is epilepsy.

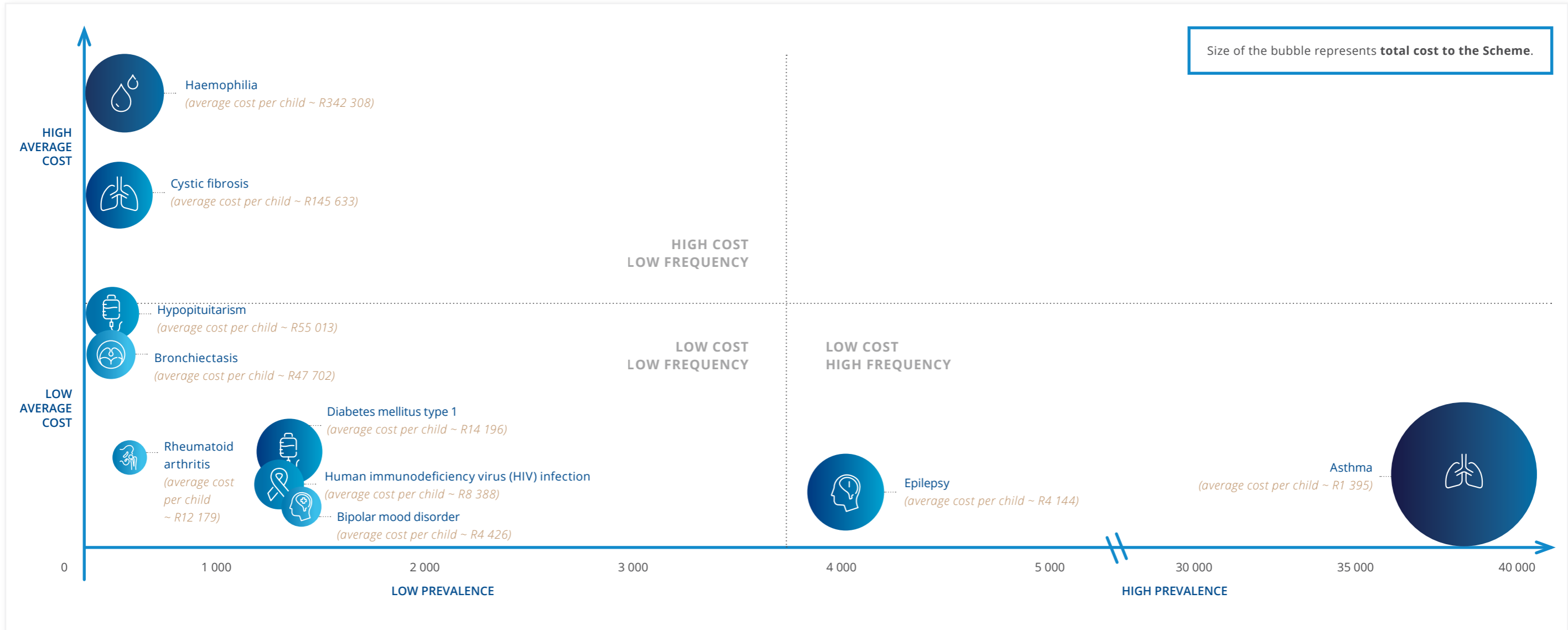
Prevalence refers to the number of children registered for a specific chronic condition per 100 000 children on the Scheme in 2018. Incidence refers to the number of children that are newly registered for the specific condition during the year, per 100 000 children on the Scheme in 2018.





Chronic conditions with the highest overall cost

The graph below illustrates that some chronic conditions are less frequent, but very costly, while others may cost relatively less, but occur much more frequently. The most costly chronic condition for children to the Scheme is asthma, since it has a very high prevalence compared to the other chronic conditions. Haemophilia and cystic fibrosis have a low prevalence but very high average cost per child.



Note: All figures for the period January 2018 – December 2018. All figures relate to children aged 2-17.



Mental health conditions

58 933

Number of children claiming for mental health conditions

R380 m

Total cost to the Scheme

29 790

Number of children newly diagnosed with a mental health condition

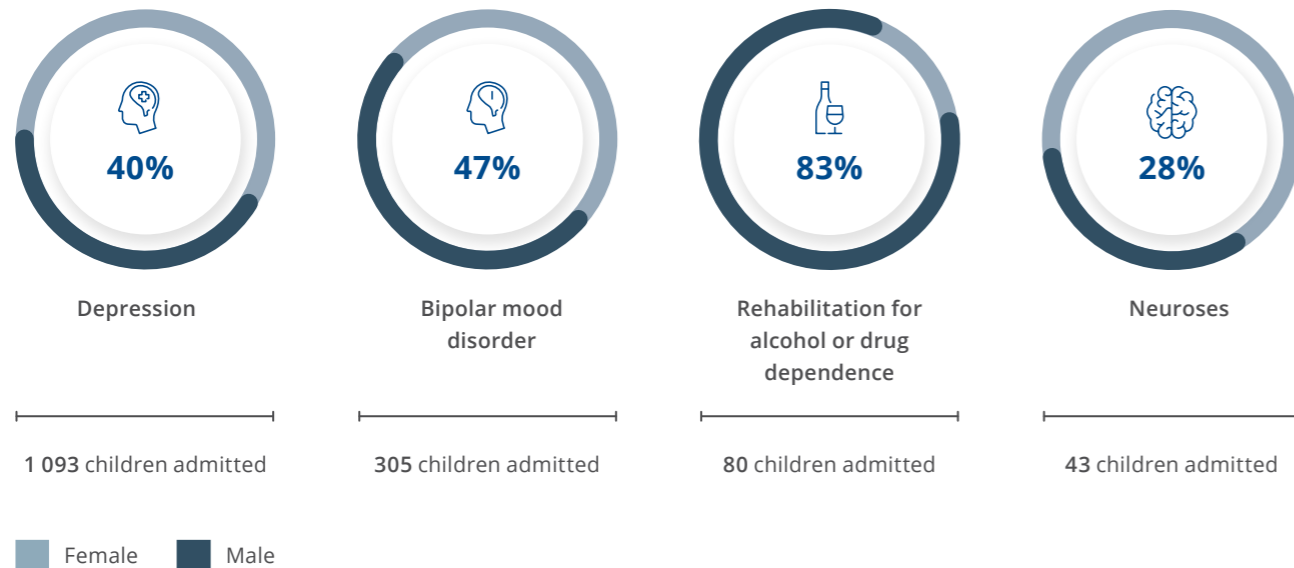
5 906

Average cost per child per annum

Proportion of admissions by type

The majority of children being admitted for rehabilitation for alcohol or drug dependence in 2018 were males, with 83% of the admissions.

This differs from admissions for depression and neuroses, which are mainly female DHMS members.



Depression

In 2018, 8 207 children claimed for depression. This amounts to 1.3% of all children on the Scheme. The incidence of depression among children is 0.8% and the average cost per child claiming for depression is R10 492 per annum.

1.3%

Prevalence

0.8%

Incidence

R103 m

Total cost to the Scheme

R10 492

Average cost per child per annum

Anxiety disorder

The prevalence and incidence of anxiety disorder among children is 0.4%. In 2018, a total of 2 912 children were claiming for anxiety disorder and had an average cost of R2 914 per child.

0.4%

Prevalence

0.4%

Incidence

R9.3 m

Total cost to the Scheme

R2 914

Average cost per child per annum

Prevalence refers to the number of children actively claiming for treatment related to mental health conditions as a proportion of the total number of children on the Scheme in 2018.

Incidence refers to the number of children with a new diagnosis of a mental health condition as a proportion of the total number of children on the Scheme in 2018.

Note: All figures for the period January 2018 – December 2018. All figures relate to children aged 2-17.



 Contact centre 0860 99 88 77  healthinfo@discovery.co.za  www.discovery.co.za

Discovery Health (Pty) Ltd, registration number 1997/013480/07, is an authorised financial services provider and administrator of medical schemes.
Discovery Health Medical Scheme, registration number 1125, is regulated by the Council for Medical Schemes and administered by Discovery Health (Pty) Ltd, registration number 1997/013480/07, an authorised financial services provider.
Vitality is not part of the medical schemes administered by Discovery Health. Vitality is a separate product sold and administered by Discovery Vitality (Pty) Ltd. Registration number 1999/007736/07, an authorised financial services provider.