

Follow these simple steps to prevent the Discovery Insure App from going into hibernation mode and preventing you from achieving a driving score and earning rewards.

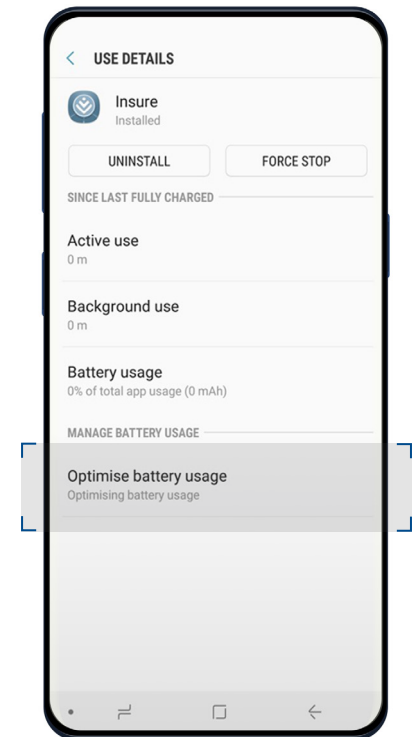
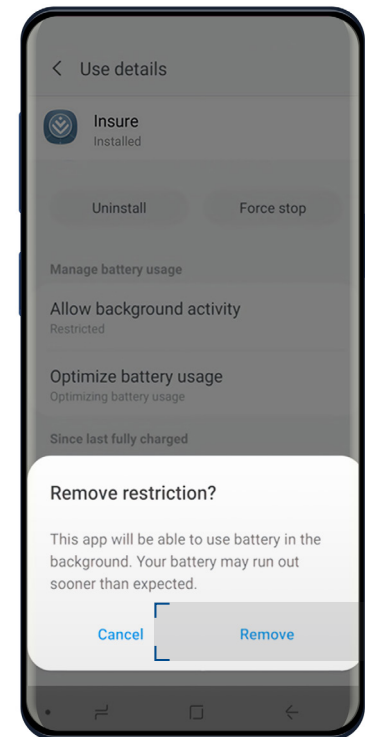
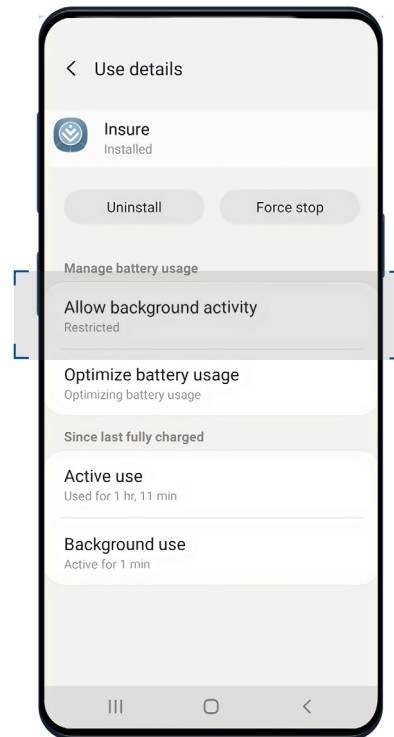
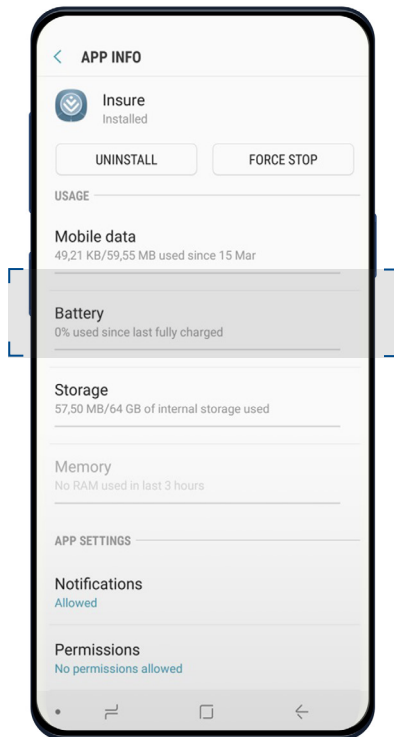
01 | Go to settings on your mobile device and then select Apps.

02 | Select the Discovery Insure App and scroll down to 'Battery' and select it.

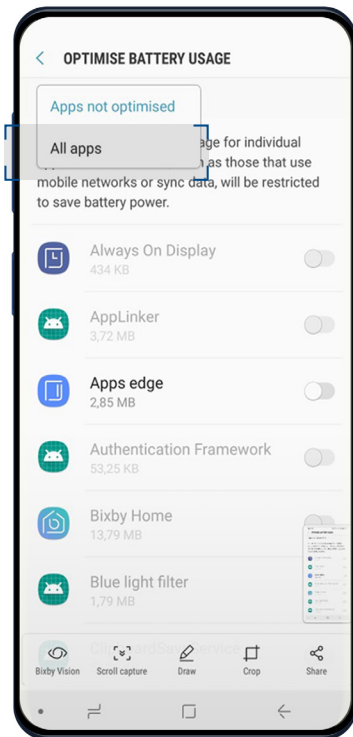
03 | Once on the battery screen, tap on 'Allow background activity'.

04 | A screen will pop up asking you to confirm 'Remove restriction' – select 'Remove'.

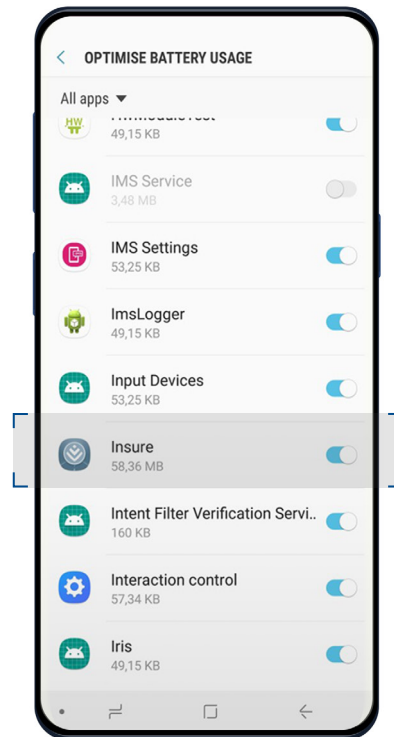
05 | Tap on 'Optimise battery usage'.



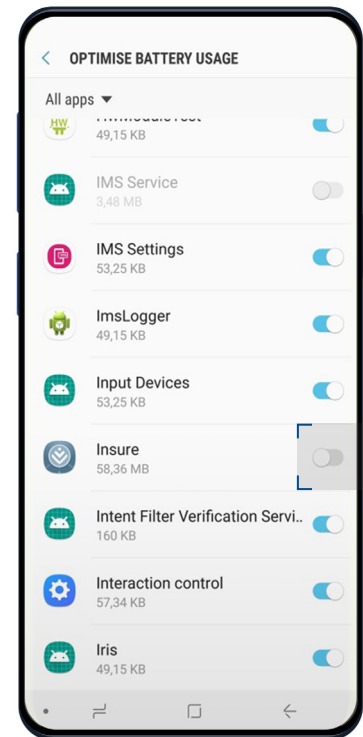
06 | Select 'All Apps' instead of 'Apps not optimised'.



07 | Find the Discovery Insure App in the list.



08 | Change the toggle position to turn off battery optimisation – it should grey out the toggle.



09 | Go back to the app battery screen and double check that 'Optimise battery usage' is set to 'Not optimised'.

