

27four Asset Select Fund of Funds

30 Jun 2025



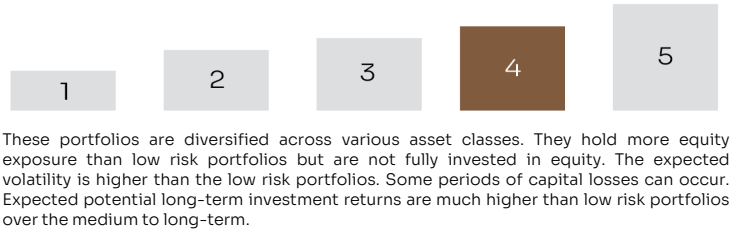
Fund Information

Investment Manager	27four Investment Managers (Pty) Ltd, a category II licensed financial services provider, FSP No: 31045
Inception Date	03 May 2012
Fund Classification	South African - Multi Asset - High Equity
Regulation 28 Compliant	Yes
Fund Trustees	The Standard Bank of South Africa Limited
Management Company	27four Collective Investments (RF)(Pty)Ltd
Benchmark	South African - Multi Asset - High Equity Category Average
Trading Closing Time	13:00
Income Distribution	Annual - 31 March
Class	A1
Fund Size	R191,141,783.72
Number Of Units	55,628,216.00
NAV Price	245.64

Fund Description

The 27four Asset Select Fund of Funds is a moderately high risk multi-managed, multi-asset class portfolio providing asset class and fund manager diversification by investing in a combination of equity, listed property and fixed income funds, both locally and internationally. Suitable for investors with a long-term investment horizon. The primary objectives are moderate to aggressive capital growth and income generation.

Risk Profile



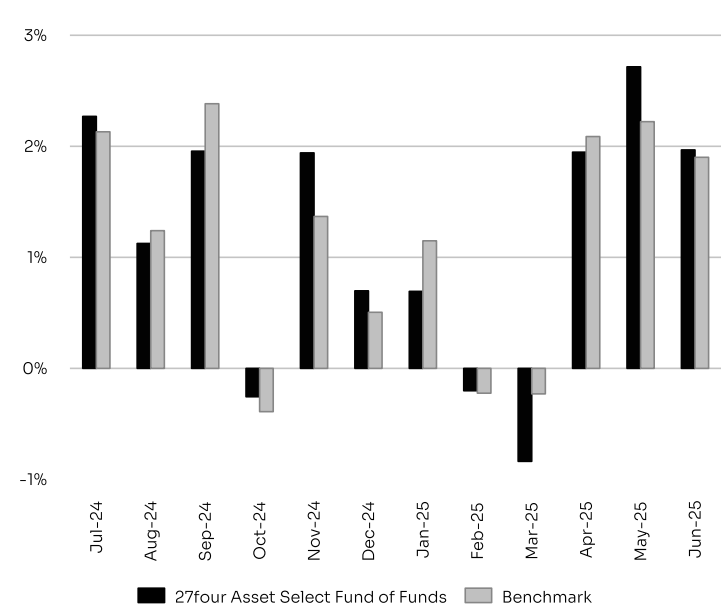
These portfolios are diversified across various asset classes. They hold more equity exposure than low risk portfolios but are not fully invested in equity. The expected volatility is higher than the low risk portfolios. Some periods of capital losses can occur. Expected potential long-term investment returns are much higher than low risk portfolios over the medium to long-term.

Fund Commentary

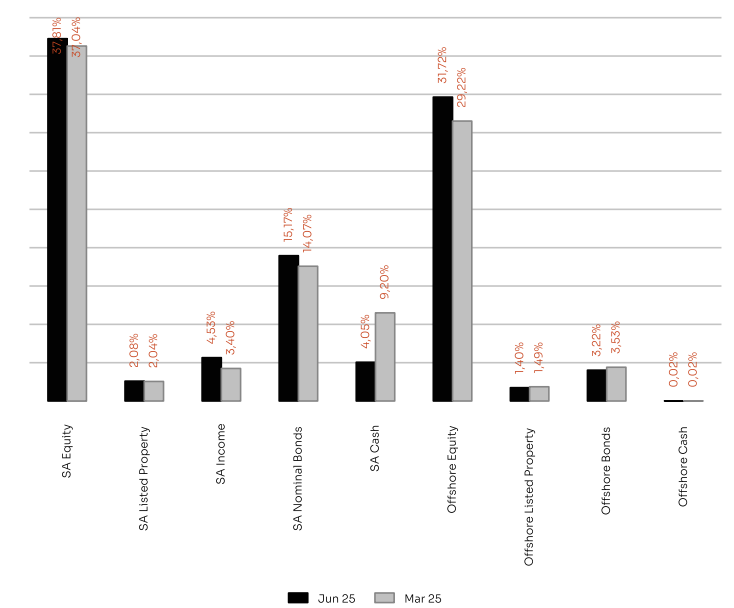
The second quarter of 2025 began with heightened volatility following the U.S. announcement of “liberation day tariffs,” sparking fears of a trade war. However, markets recovered as a 90-day enforcement pause and bilateral agreements eased tensions. Geopolitical risks soon took centre stage, with a brief Israel-Iran conflict and renewed Chinese military activity near Taiwan pushing oil prices higher and prompting a flight to safe-haven assets. Risk sentiment rebounded after a U.S.-brokered ceasefire. Meanwhile, inflation eased in the U.S. and Eurozone, prompting rate cuts, while South Africa followed suit amid subdued inflation. Growth was mixed: U.S. momentum stayed firm, Europe stagnated, and South Africa’s economy remained fragile despite signs of stabilisation in the private sector. Nonetheless, financial markets maintained their strong momentum from the first quarter. In South Africa, local equities demonstrated resilience despite a deteriorating macroeconomic and fiscal outlook. The All-Share Index surged by 10.15% during the quarter. Industrials led the gains, climbing 12.03%, followed by resources at 9.77%. Financials also posted solid growth of 7.82%, supported by easing inflation and declining short-term interest rates, which lifted earnings expectations. The All-Property Index advanced by 10.77%, buoyed by optimism around potential interest rate cuts. Meanwhile, the All-Bond Index rose by 5.88%, bolstered by the South African Reserve Bank’s formal indication of plans to lower the inflation target—an initiative expected to reduce long-term borrowing costs. The Composite Inflation-Linked Index (CILI) gained 0.88%, supported by stable inflation, while the STeFI returned 1.86% over the quarter. Globally, all returns are in U.S. dollar terms unless otherwise stated. The MSCI World Index advanced 10.96%, led by the U.S. (+10.99%) on the back of a rebound in the “Magnificent Seven,” particularly Nvidia and Microsoft. Growth stocks outperformed sharply, with the MSCI World Growth Index rising 17.67%, well ahead of Value (+3.51%) and Quality (+3.72%) factors. UK and European ex-UK equities gained 7.55% and 10.51%, respectively, supported by easing monetary policy and diminished tariff-related risks. In fixed income, the Bloomberg Global Aggregate Bond Index rose 4.52%, while major bond yields stabilised—U.S. 10-year Treasury yields hovered around 4.2%, German Bunds declined to roughly 2.6%, and UK gilts remained near 4.5%. The MSCI Emerging Markets Index climbed 11.02%, lifted by a softer dollar, looser monetary policy, and easing trade concerns. However, most of the gains from offshore investments were blunted by the strength of the domestic currency relative to the greenback. During the second quarter of 2025, the South African rand appreciated markedly against the U.S. dollar. The USD/ZAR exchange rate peaked at 19.742 on April 8 before strengthening to 17.711 by June 30, representing a gain of approximately 10.3% for the rand over the quarter.

27four Asset Select Fund delivered 6.78%, outperforming high equity category average by 44 basis points. The fund’s outperformance in the second quarter was driven by overweight positions in risk assets and a moderate bias on the domestic side. It also benefited from strong performance from most of its underlying managers. Looking ahead, while the global environment remains fragile, the outlook is not uniformly negative. Inflation continues to moderate, and monetary policy is gradually becoming more supportive across key regions. However, geopolitical tensions, fiscal vulnerabilities, and uneven growth trajectories are expected to continue influencing asset class performance in the second half of 2025. We believe central banks will remain broadly supportive of financial markets, with some continuing to lower interest rates cautiously. Against this backdrop, we maintain a measured pro-risk stance—tilted toward domestic over offshore assets, and equities over defensive income—emphasising valuation support and favourable policy dynamics. Our focus remains on diversification, structural tailwinds, and the flexibility to adapt to shifting policy and market dynamics. The portfolio has remained consistent in adhering to its policy objective.

Performance Summary



Asset Allocation



Performance Analysis

	Fund	Benchmark
1 Month	1.97%	1.90%
3 Months	6.78%	6.34%
6 Months	6.40%	7.07%
YTD	6.40%	7.07%
1 Year	14.88%	15.03%
3 Years (Annualised)	13.86%	13.28%
5 Years (Annualised)	11.41%	11.80%
Inception (Annualised)	9.67%	8.77%
Inception (Cumulative)	237.34%	202.36%
Highest Rolling 1 Year Return	28.94%	30.72%
Lowest Rolling 1 Year Return	-11.02%	-10.46%

Underlying Manager Breakdown

Asset Class	Fund/s
SA Equity	Fairtree Equity Prescient Fund
SA Equity	All Weather BCI Equity Fund
SA Equity	Ninety One SA Equity Fund
SA Equity	Rezco Equity Fund
SA Equity	Coronation SA Equity Fund
SA Equity	Prescient Equity Top 40 Fund
SA Listed Property	Sesfikile BCI Property Fund
SA Income	27four Diversified Income Fund UT
SA Nominal Bonds	ABSA Bond Fund
SA Nominal Bonds	Momentum Active Bond Fund
SA Cash	Coronation JIBAR Plus Fund
SA Cash	ZAR Call Account
Offshore Equity	Global Equity Fund of Funds
Offshore Equity	iShares Core MSCI World UCITS ETF
Offshore Listed Property	Franklin Global Real Estate Fund
Offshore Bonds	Morgan Stanley Global Fixed Income Opportunites Fund
Offshore Cash	USD Call Account

Monthly Fund Performance

	2012	2013	2014	2015	2016	2017	2018	2019	2020	2021	2022	2023	2024	2025
Jan	-	3.56%	-1.76%	1.46%	-2.26%	1.63%	-0.28%	2.12%	1.72%	2.39%	-2.70%	6.38%	0.09%	0.69%
Feb	-	0.52%	2.24%	3.09%	0.12%	0.14%	-0.95%	3.10%	-5.09%	3.99%	0.95%	-0.50%	1.00%	-0.20%
Mar	-	2.35%	0.54%	1.05%	4.01%	1.38%	-1.81%	1.73%	-10.49%	0.63%	-0.13%	-0.72%	0.85%	-0.84%
Apr	-	0.53%	1.23%	1.84%	0.17%	1.73%	3.45%	3.08%	10.22%	2.23%	-1.82%	1.97%	0.15%	1.95%
May	-0.16%	4.83%	1.61%	-0.75%	2.73%	-0.06%	-1.80%	-3.58%	0.54%	-0.10%	-0.68%	-0.85%	1.52%	2.72%
Jun	1.75%	-2.20%	1.41%	-0.74%	-2.15%	-2.13%	2.37%	1.71%	3.26%	0.40%	-5.43%	1.73%	1.81%	1.97%
Jul	3.28%	1.76%	0.89%	1.89%	0.52%	3.04%	-0.01%	-0.77%	1.61%	2.92%	4.19%	1.16%	2.27%	-
Aug	1.71%	1.10%	-0.15%	-0.88%	1.38%	0.27%	3.77%	0.03%	0.75%	0.66%	-0.53%	-0.31%	1.13%	-
Sep	0.70%	3.59%	-0.39%	-0.08%	-1.42%	0.63%	-3.14%	0.90%	-2.94%	-1.17%	-3.40%	-3.34%	1.96%	-
Oct	2.47%	2.63%	0.78%	4.70%	-2.51%	3.79%	-3.05%	1.61%	-3.42%	3.06%	3.93%	-2.19%	-0.26%	-
Nov	2.38%	-0.30%	1.28%	-0.27%	0.02%	0.23%	-1.56%	-0.75%	7.24%	1.53%	4.75%	7.90%	1.94%	-
Dec	0.98%	2.54%	0.89%	-0.27%	0.82%	-2.12%	-0.16%	0.84%	2.19%	3.86%	-1.16%	1.64%	0.70%	-
Yr.	13.84%	22.79%	8.85%	11.44%	1.22%	8.68%	-3.40%	10.28%	4.01%	22.26%	-2.57%	13.01%	13.95%	6.40%

Risk Analysis

	Fund	Benchmark
Volatility (Annualised)	8.48%	7.83%
% Positive Months	65.82%	65.82%
% Negative Months	34.18%	34.18%
Best Month	10.22%	9.60%
Worst Month	-10.49%	-9.99%
Average Negative Months	-1.61%	-1.55%
Maximum Drawdown	-15.04%	-14.09%
Tracking Error	1.87%	-
Sharpe Ratio	0.38	-

Investment Terms

	Fees
Initial Fee	0.00%
Annual Management Fee	0.63% excl VAT
Minimum Investment Size	R5000 lump sum or R500 monthly debit order

Income Distribution

1st working day after declaration

- 2025/03/31 : 5.53 cents per unit
- 2024/03/31 : 5.52 cents per unit
- 2023/03/31 : 5.11 cents per unit
- 2022/03/31 : 2.52 cents per unit

Disclaimer

Collective Investment Schemes in Securities (CIS) should be considered as medium to long-term investments. The value may go up as well as down and past performance is not necessarily a guide to future performance. CISs are traded at the ruling price and can engage in scrip lending and borrowing. The collective investment scheme may borrow up to 10% of the market value of the portfolio to bridge insufficient liquidity. A schedule of fees, charges and maximum commissions is available on request from the Manager. There is no guarantee in respect of capital or returns in a portfolio. A CIS may be closed to new investors in order for it to be managed more efficiently in accordance with its mandate. CIS prices are calculated on a net asset basis, which is the total value of all the assets in the portfolio including any income accruals and less any permissible deductions (brokerage, STT, VAT, auditors fees, bank charges, trustee and custodian fees and the annual management fee) from the portfolio divided by the number of participatory interests (units) in issue. Forward pricing is used. The Fund's Total Expense Ratio (TER) reflects the percentage of the average Net Asset Value (NAV) of the portfolio that was incurred as charges, levies and fees related to the management of the portfolio. A higher TER does not necessarily imply a poor return, nor does a low TER imply a good return. The current TER cannot be regarded as an indication of future TER's. During the phase in period TERs do not include information gathered over a full year.

A Fund of Funds is a portfolio that invests in portfolios of collective investment schemes, which levy their own charges, which could result in a higher fee structure for these portfolios.

Where a current yield has been included for Funds that derive its income primarily from interest bearing income, the yield is a weighted average yield of all underlying interest bearing instruments as at the last day of the month. This yield is subject to change as market rates and underlying investments change.

Where foreign securities are included in a portfolio there may be potential constraints on liquidity and the repatriation of funds, macroeconomic risks, political risks, foreign exchange risks, tax risks, settlement risks; and potential limitations on the availability of market information. The investor acknowledges the inherent risk associated with the selected investments and that there are no guarantees. Please note that all documents, notifications of deposit, investment, redemption and switch applications must be received by 27four by or before 13:00 (SA), to be transacted at the net asset value price for that day. Where all required documentation is not received before the stated cut off time 27four shall not be obliged to transact at the net asset value price as agreed to. Money market Funds are priced at 1pm all other Funds are priced at either 3pm or 5pm depending on the nature of the Fund. Prices are published daily and are available on the 27four platform services website.

Glossary

Annualised performance: Annualised performance show longer term performance rescaled to a 1 year period. Annualised performance is the average return per year over the period. Actual annual figures are available to the investor on request.

Best month: Largest increase in any single month.

Highest & lowest return: The highest and lowest returns over any 1 year period since the inception date.

Max drawdown: The maximum peak to trough loss suffered by the Fund since inception.

NAV: The net asset value represents the assets of a Fund less its liabilities.

Sharpe ratio: The Sharpe ratio is used to indicate the excess return the portfolio delivers over the risk free rate per unit of risk adopted by the fund.

Standard deviation: The deviation of the return stream relative to its own average.

Tracking error: The volatility of the difference in returns between a Fund and its Benchmark.Also known as active risk.

% positive months: The percentage of months since inception where the Fund has delivered positive return.

Fund Specific Risks

Currency exchange risk: Changes in the relative values of individual currencies may adversely affect the value of investments and any related income.

Default risk: The risk that the issuers of fixed income instruments (e.g. bonds) may not be able to meet interest payments nor repay the money they have borrowed.The issuers credit quality is vital. The worse the credit quality, the greater the risk of default and therefore investment loss.

Derivatives risk: The use of derivatives could increase overall risk by magnifying the effect of both gains and losses in a Fund. As such, large changes in value and potentially large financial losses could result.

Derivative counterparty risk: A counterparty to a derivative transaction may experience a breakdown in meeting its obligations thereby leading to financial loss.

Developing Market (excluding SA) risk: Some of the countries invested in may have less developed legal, political, economic and/or other systems. These markets carry a higher risk of financial loss than those in countries generally regarded as being more developed.

Equity investment risk: Value of equities (e.g. shares) and equity-related investments may vary according to company profits and future prospects as well as more general market factors. In the event of a company default (e.g. bankruptcy), the owners of their equity rank last in terms of any financial payment from that company.

Foreign investment risk: Foreign securities investments may be subject to risks pertaining to overseas jurisdictions and markets, including (but not limited to) local liquidity, macroeconomic, political, tax, settlement risks and currency fluctuations.

Geographic / Sector risk: For investments primarily concentrated in specific countries, geographical regions and/or industry sectors, their resulting value may fluctuate more than portfolios that are more broadly invested.

Interest rate risk: The value of fixed income investments (e.g. bonds) tends to be inversely related to interest and inflation rates. Hence their value decreases when interest rates and/or inflation rises.

Liquidity risk: If there are insufficient buyers or sellers of particular investments, the result may lead to delays in trading and being able to make settlements, and/or large fluctuations in value. This may lead to larger financial losses than expected.

Property risk: Investments in real estate securities can carry the same risks as investing directly in real estate itself. Real estate prices

Performance has been calculated using net NAV to NAV numbers with income reinvested. The portfolio performance figures are calculated for the relevant class of the portfolio. The performance for each period shown reflects the return for investors who have been fully invested for that period. Individual investor performance may differ as a result of initial fees, the actual investment date, the date of reinvestments and dividend withholding tax. Full performance calculations are available from the manager on request.

The investment performance is calculated by taking the actual initial fees and all ongoing fees into account for the amount shown and income is reinvested on the reinvestment date.

Transaction Costs (TC) is the percentage of the value of the Fund incurred as costs relating to the buying and selling of the Fund's underlying assets. Transaction costs are a necessary cost in administering the Fund and impacts Fund returns. It should not be considered in isolation as returns may be impacted by many other factors over time including market returns, the type of Fund, investment decisions of the investment manager and the TER.

For any additional information such as fund prices, brochures and application forms please go to www.27four.com.

This document is for information purposes only and does not constitute or form part of any offer to issue or sell or any solicitation of any offer to subscribe for or purchase any particular investments. Opinions expressed in this document may be changed without notice at any time after publication. We therefore disclaim any liability for any loss, liability, damage (whether direct or consequential) or expense of any nature whatsoever which may be suffered as a result of or which may be attributable directly or indirectly to the use of or reliance upon the information.

The investment performance is for illustrative purposes only

TER Breakdown

	Fees
Management Fee	0.73%
Performance Fees	0.00%
Other Cost	0.57%
Total Expense Ratio (TER)	1.30%
Transaction Cost (TC)	0.01%
Total Investment Charge (TIC)	1.31%

Contact Details

Management Company

27four Collective Investments (RF)(Pty)Ltd, Registration number: 2015/291620/07 Physical address : 5 Cavendish Street, Claremont, Cape Town 7708 Postal address: P O Box 44467,Claremont,7735. Telephone number: 011 442 2464 E-mail address: info@27four.com

Trustee

The Standard Bank of South Africa Limited Physical address: 9th Floor, The Towers, Tower North, 2 Hertzog Boulevard, Cape Town, 8001 Telephone number: +27 11 636 9112 Website: www.standardbank.co.za

Investment Manager

27four Investment Managers (Pty) Ltd, Registration number: 2007/006556/07 is an authorised Financial Services Provider (FSP 31045) under the Financial Advisory and Intermediary Services Act (No.37 of 2002), to act in the capacity as investment manager. This information is not advice, as defined in the Financial Advisory and Intermediary Services Act (N0.37 of 2002). Please be advised that there may be representatives acting under supervision Physical address: Firestation Rosebank, Fifth Floor, 16 Baker Street, Rosebank, 2196 Postal address: PO Box 522417, Saxonwold, Johannesburg, 2132 Telephone number: 011 442 2464 Website: www.27four.com

